



Bgtech
Soluzioni Innovative srl

Laboratori ed Aule Polifunzionali Ibride e Strumenti per Laboratorio



La Bgtech Soluzioni Innovative srl, come grossista all'ingrosso di Arredi e Attrezzature da Laboratorio con propria sede operativa sita a Cologno Monzese in Via Giovanni Pascoli nr. 25, si avvale della MAX Laboratory Equipment per la commercializzazione e l'integrazione di device tecnologici per la realizzazione di laboratori tecnici completi di strumentazione, utilizzando un controllo di produzione in fabbrica con strumenti avanzati. Il valore adottato è "Quality First, Delivery First, Price First, Service First".

La Bgtech Soluzioni Innovative srl offre su tutto il territorio italiano i seguenti servizi:

1. Progettazione degli Ambienti e della Strumentazione;
2. Realizzazione del Rendering 3D dell'Ambiente;
3. Fornitura dell'Ambiente chiavi in mano;

I servizi sono rivolti sia a Pubbliche Amministrazioni che anche al mercato Business

ENTERPRISE TEAM

SALES TEAM

01

Extensive export experience, familiar with product knowledge, understanding the basis of design drawings, familiar with export procedures and customs clearance rules of various countries.

DESIGN TEAM

02

An excellent team of designers makes suggestions and uses their own experience to create the most professional, safe and beautiful laboratory.

PRODUCTION TEAM

03

Relying on the largest laboratory factory in Guangzhou, it adopts advanced management methods and production techniques.

AFTER-SALES TEAM

04

Provide a professional after-sales team to go abroad for installation, and help customers build the perfect laboratory in the fastest time.

CONTENTS

	PAGE
LAB BENCH	01~24
ANTI-VIBRATION TABLE	25~26
PRIMARY & JUNIOR SCHOOL LAB	27~28
WORKTOP	29~30
FUME HOOD	31~34
LAMINAR FLOW CABINET&BIOSAFETY CABINET	35~36
FLAMMABLE SAFETY CABINET	37~38
GAS CYLINDER CABINET	39~40
LAB CABINET	41~42
PURIFYING EQUIPMENT	43~44
LAB ACCESSORIES	45~50
LABORATORY INSTRUMENTS	51~54
GALLERY	55~58



PRODUCT FEATURE



Corrosive
Resistance



Wear
Resistance



Scratch
Resistance



Impact
Resistance



Durability



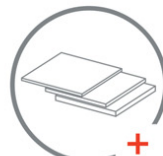
Strong Color
Fastness



Easy
Fabrication



Easy Clean



Multi-
thickness



Environmental
Friendly

01 FLOOR MOUNTED LAB BENCH

- Floor Mounted All Steel Lab Bench

02 C-FRAME LAB BENCH

- C-Frame All Steel Lab Bench
- C-Frame Steel-Wood Lab Bench

03 H-FRAME/MODULAR LAB BENCH

- H-Frame All Steel Lab Bench
- H-Frame Steel-Wood Lab Bench

04 MOBILE MODULAR LAB BENCH

05 PP LAB BENCH

06 STAINLESS STEEL LAB BENCH

07 REAGENT RACK

08 WALL CUPBOARD

09 OTHER LAB BENCH

FLOOR MOUNTED LAB BENCH



ISLAND BENCH

The Floor Mounted Lab Bench is cabinet units support countertop, and the cabinet units are fixed by connecting rods.

This kind of structure has good load-bearing performance, and the load-bearing capacity can reach 500KG/m², which can meet the use requirements of large-scale precision instruments&equipment in the laboratory.

Cabinet unit is in direct contact with the ground to prevent dust from entering the bottom of the workbench, which is the first choice for dust-free laboratories.

Remarks: The Floor Mounted Lab Bench is only suitable for all-steel cabinet units. If use wooden cabinet units, it will be expanded and deformed when it touches the damp ground.



LB-FM-06

ADVANTAGE

- Durable
- High cost performance
- More storage space
- Easy to install
- Good load-bearing performance and excellent stability. Bearing up to 500KG/m²

Multiple combinations



LB-FM-01



LB-FM-02



LB-FM-03



LB-FM-04



LB-FM-05



LB-FM-06

FLOOR MOUNTED WALL BENCH



Multiple combinations



LB-FM-07



LB-FM-08



LB-FM-09



LB-FM-10



LB-FM-11



LB-FM-12

SPECIFICATION

COUNTERTOPS

- (1) Phenolic Resin countertop: 12.7mm(Edge banding&thicken to 25.4mm)/16/19/25mm thickness
- (2) Epoxy Resin countertop: 16/19/25mm thickness
- (3) Ceramic countertop: 15/20/25mm thickness
- (4) Trespa countertop: 13/16/19/20/25mm thickness
- (5) Granite/Marble countertop: 20mm thickness

CABINET&ACCESSORIES

- (1) Cabinet: 1.0mm full-thickness high-quality cold-roll steel sheet is used as a whole; the steel surface is treated, phosphating and other processes, and then electrostatic powder coated with epoxy resin, cured at 220°C high temperature. and the surface is smooth, with a thickness of up to 1.15~1.2mm. The cabinet door is double-layered inside and outside, filled with sound insulation material.
- (2) Connecting rod: The whole adopts 40*60*1.5mm thick high-quality cold-rolled rectangle tube, the steel surface is treated, phosphating and other processes, and then electrostatic powder coated with epoxy resin, cured at 220°C high temperature, and the surface is smooth.
- (3) Handle: Non-welded linear/C-shaped stainless steel/Insertion Aluminum alloy handle.
- (4) Rail: DTC 16-inch three-section silent rail.
- (5) Hinge: DTC 105°/175° buffer hinge/stainless steel hinge.
- (6) Footing: Use laboratory-specific adjustable feet with an adjustment range of ≥ 35 mm, strong bearing capacity, the balance of the Lab bench can be adjusted.

C-FRAME LAB BENCH

ISLAND BENCH

The C-Frame Lab Bench is supported by an independent steel frame, connecting the upper and lower cabinet units and the countertop. Simple structure, flexible and changeable, can be combined freely.

The C-Frame structure can be selected without cabinet, suspended cabinet and mobile cabinet structure, good moisture resistance, easy installation and disassembly. After installation, the upper and lower cabinet units can be moved, added or removed according to laboratory needs without affecting other parts of the bench system. With primary shock absorption function, the load-bearing capacity can reach more than 250KG/m².



ADVANTAGE

- The structure is simple, flexible and changeable, and can be combined freely.
- No cabinet, suspended cabinet and mobile cabinet structure can be selected.
- Easy to clean, enough space between cabinets and floor.
- Relatively stable, can carry more than 200KG/m².
- Upper and lower cabinet units can be moved, added or removed according to laboratory needs without affecting the rest of the bench system.

Multiple combinations



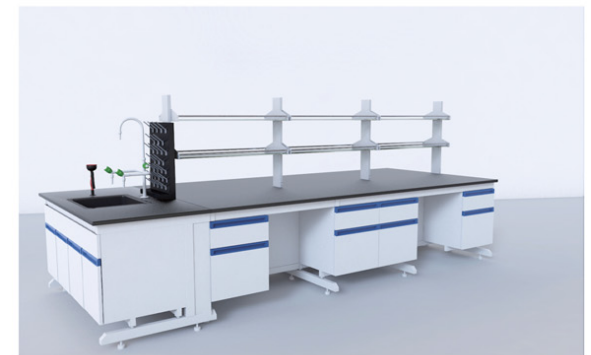
LB-CF-01



LB-CF-02



LB-CF-03



LB-CF-04



LB-CF-05



LB-CF-06

C-FRMAE WALL BENCH



Multiple combinations



LB-CF-07



LB-CF-08



LB-CF-09



LB-CF-10



LB-CF-11



LB-CF-12

SPECIFICATION

COUNTERTOPS

- (1) Phenolic Resin countertop: 12.7mm(Edge banding&thicken to 25.4mm)/16/19/25mm thickness
- (2) Epoxy Resin countertop: 16/19/25mm thickness
- (3) Ceramic countertop: 15/20/25mm thickness
- (4) Trespa countertop: 13/16/19/20/25mm thickness
- (5) Granite/Marble countertop: 20mm thickness

FRAME & ACCESSORIES

- (1) Frame: The whole adopts 40*60*1.5mm thick high-quality cold-rolled rectangle tube, the steel surface is treated, phosphating and other processes, and then electrostatic powder sprayed with epoxy resin, cured at 220°C high temperature, and the surface is smooth.
- (2) Handle: Aluminum alloy/Non-welded linear/C-shaped stainless steel/Insertion Aluminum alloy.
- (3) Rail: DTC 16-inch three-section silent rail.
- (4) Hinge: DTC 105°/175° buffer hinge/stainless steel hinge.
- (5) Footing: Use laboratory-specific adjustable feet with an adjustment range of ≥35mm, strong bearing capacity, the balance of the Lab bench can be adjusted.

OPTION CABINET UNIT

OPTION ① Wooden Cabinet

The cabinet body thickness is 15mm, the door and drawer panels are made of 18mm thickness high-quality environmentally friendly double-face MDF/melamine board, and the edges are sealed with 2mm thick PVC edge strips. The edges are firm, clean, and free of burrs, the bond is firm.

OPTION ② Steel Cabinet

1.0mm full-thickness high-quality cold-roll steel sheet is used as a whole; the steel surface is treated, phosphating and other processes, and then electrostatic powder sprayed with epoxy resin, cured at 220°C high temperature, and the surface is smooth, with a thickness of up to 1.15~1.2mm. The cabinet door is double-layered inside and outside, filled with sound insulation material.

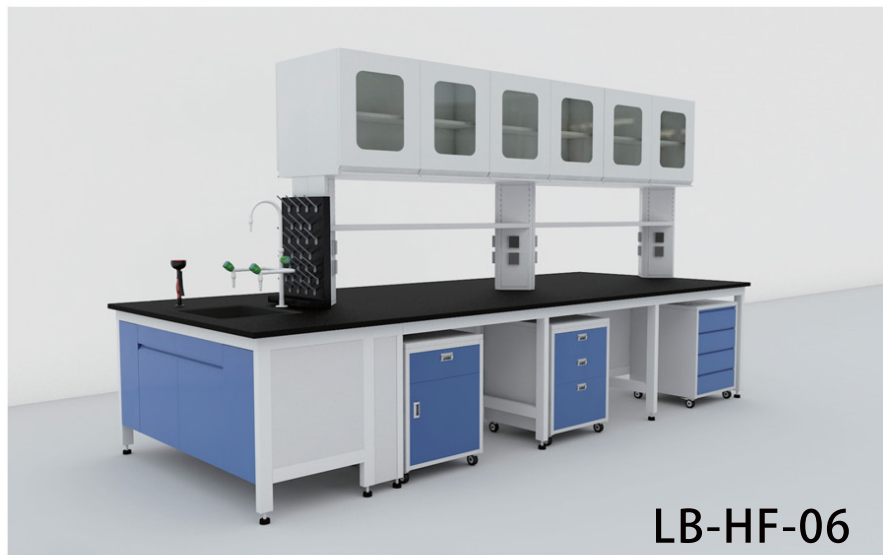
H-FRAME/MODULAR LAB BENCH

ISLAND BENCH

The H-Frame/Modular Lab Bench is supported by a solid H-Frame steel frame, connecting the upper and lower cabinet units and the countertop. Optional mobile cabinet, no cabinet and suspended cabinet structure.

Higher load-bearing capacity than C-Frame Lab Bench structure.

Compared to Floor Mounted Lab Bench, which install cabinets unit on the ground and are difficult to rearrange after installation, H-Frame Lab Bench allow lab personnel to easily reconfigure or customize lab layouts, and can be recreated using cabinet modular unit for a variety of layout.



ADVANTAGE

- The new structure is the trend of the modern laboratory.
- Higher load-bearing capacity than C-Frame lab bench structure. Load bearing up to 350KG/m².
- Free configuration, compared to the Floor Mounted lab bench where the lab cabinet unit is installed on the ground, which is difficult to rearrange after installation, the H-Frame lab bench allows laboratory personnel to easily reconfigure or customize the laboratory floor plan.

Multiple combinations



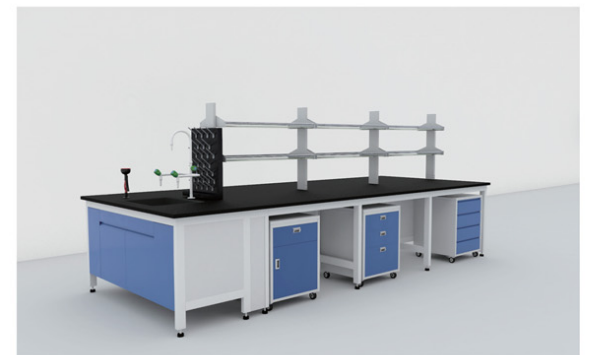
LB-HF-01



LB-HF-02



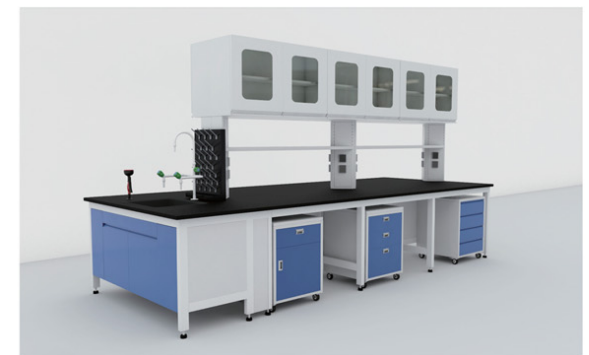
LB-HF-03



LB-HF-04



LB-HF-05



LB-HF-06

H-FRAME/MODULAR WALL BENCH



Multiple combinations



LB-HF-07



LB-HF-08



LB-HF-09



LB-HF-10



LB-HF-11



LB-HF-12

SPECIFICATION

COUNTERTOPS

- (1) Phenolic Resin countertop: 12.7mm(Edge banding&thicken to 25.4mm)/16/19/25mm thickness
- (2) Epoxy Resin countertop: 16/19/25mm thickness
- (3) Ceramic countertop: 15/20/25mm thickness
- (4) Trespa countertop: 13/16/19/20/25mm thickness
- (5) Granite/Marble countertop: 20mm thickness

FRAME & ACCESSORIES

- (1) Frame: The whole adopts 40*60*1.5mm thick high-quality cold-rolled rectangle tube, the steel surface is treated, phosphating and other processes, and then electrostatic powder sprayed with epoxy resin, cured at 220°C high temperature, and the surface is smooth.
- (2) Handle: Aluminum alloy/Non-welded linear/C-shaped stainless steel/Insertion Aluminum alloy.
- (3) Rail: DTC 16-inch three-section silent rail.
- (4) Hinge: DTC 105°/175° buffer hinge/stainless steel hinge.
- (5) Footing: Use laboratory-specific adjustable feet with an adjustment range of ≥ 35 mm, strong bearing capacity, the balance of the Lab bench can be adjusted.
- (6) Wheel for cabinet: High-quality PU mute universal wheel with brake, heavy load, high mechanical strength, shock absorption, wear resistance, no damage to the floor. A single wheel bears 120kg.

OPTION CABINET UNIT

OPTION ① Wooden Cabinet

The cabinet body thickness is 15mm, the door and drawer panels are made of 18mm thickness high-quality environmentally friendly double-face MDF/melamine board, and the edges are sealed with 2mm thick PVC edge strips. The edges are firm, clean, and free of burrs, the bond is firm.

OPTION ② Steel Cabinet

1.0mm full-thickness high-quality cold-roll steel sheet is used as a whole; the steel surface is treated, phosphating and other processes, and then electrostatic powder sprayed with epoxy resin, cured at 220°C high temperature, and the surface is smooth, with a thickness of up to 1.15mm~1.2mm. The cabinet door is double-layered inside and outside, filled with sound insulation material.

MOBILE MODULAR LAB BENCH



Mobile Modular Lab Bench is designed to provide flexible and adaptable benching solutions to support the different work flow needs of any lab. Our mobile modular lab bench are some of the most flexible on the market today and allow reconfigurations to be made quickly and easily as personnel or space requirements change.

Max Mobile Modular Lab Bench features leveling casters designed to make adaptations extremely quick and easy to meet your lab requirements and can be easily integrated with fixed casework.



SPECIFICATION

COUNTERTOPS

- (1) Phenolic Resin countertop: 12.7mm(Edge banding&thicken to 25.4mm)/16/19/25mm thickness
- (2) Epoxy Resin countertop: 16/19/25mm thickness
- (3) Ceramic countertop: 15/20/25mm thickness
- (4) Trespa countertop: 13/16/19/20/25mm thickness
- (5) Granite/Marble countertop: 20mm thickness

FRAM

- (1) Frame: high-quality cold-rolled rectangle tube, the steel surface is treated with electrostatic powder sprayed with epoxy resin, cured at 220°C high temperature, and the surface is smooth.
- (2) Handle: Aluminum alloy/Non-welded linear/C-shaped stainless steel/Insertion Aluminum alloy.
- (3) Rail: DTC 16-inch three-section silent rail.
- (4) Hinge: DTC 105°/175° buffer hinge/stainless steel hinge.
- (5) Footing: Use laboratory-specific adjustable feet with an adjustment range of ≥35mm, strong bearing capacity, the balance of the Lab bench can be adjusted.
- (6) Wheel for Frame: Use High-quality original leveling casters from FootMaster, over 1000kg load capacity on the bench.
- (7) Wheel for cabinet: High-quality PU mute universal wheel with brake, heavy load, high mechanical strength, shock absorption, wear resistance, no damage to the floor. A single wheel bears 120kg.

OPTION CABINET UNIT

OPTION ① Wooden Cabinet

The cabinet body thickness is 15mm, the door and drawer panels are made of 18mm thickness high-quality environmentally friendly double-face MDF/melamine board, and the edges are sealed with 2mm thick PVC edge strips. The edges are firm, clean, and free of burrs, the bond is firm.

OPTION ② Steel Cabinet

1.0mm full-thickness high-quality cold-roll steel sheet is used as a whole; the steel surface is treated, phosphating and other processes, and then electrostatic powder sprayed with epoxy resin, cured at 220°C high temperature, and the surface is smooth, with a thickness of up to 1.15~1.2mm. The cabinet door is double-layered inside and outside, filled with sound insulation material.



ADVANTAGE

1) Maximize Space

Mobile Modular Lab Bench can be arranged to leave no wasted space. Some combinations allow multiple configurations in a smaller area. Layout can be adjusted as needed, and unlike fixed casework, modular options can be moved with ease.

2) Provide Distanced Workstations to Personnel

In today's uncertain times, it is important to have the ability to offer distanced work spaces.

Even if a lab or workspace was not created with this in mind, mobile modular components make layout changes much easier. Traditional custom floor mounted bench would be difficult to remove and relocate without significant downtime or costs.

3) Improved Lab Expansion Capability

One of the most attractive benefits for mobile modular casework is the ability to expand as needed. Unlike floor mounted bench, modular options can be changed as needed.

4) Ideal Lab Layout and Design

Modern lab design requires a combination of workspace optimization, efficiency and social distancing.

(Especially at colleges and universities.) Mobile modular casework can adapt to fit workspace and personnel needs as lab design and layouts change with time.

5) Customization & Durability

The customization and quality of flexible casework is paramount. Solutions are made to last for years, and provide easy serviceability if required.

6) Price

Lab designers and architects must consider the full picture when pricing out modular casework. The total cost of ownership can be much lower than fixed casework. The amount of labor required for installation is lower, as are any floorplan modifications. Generally, modular can produce a lower initial cost for larger installations and sometimes smaller ones as well.

Summary:

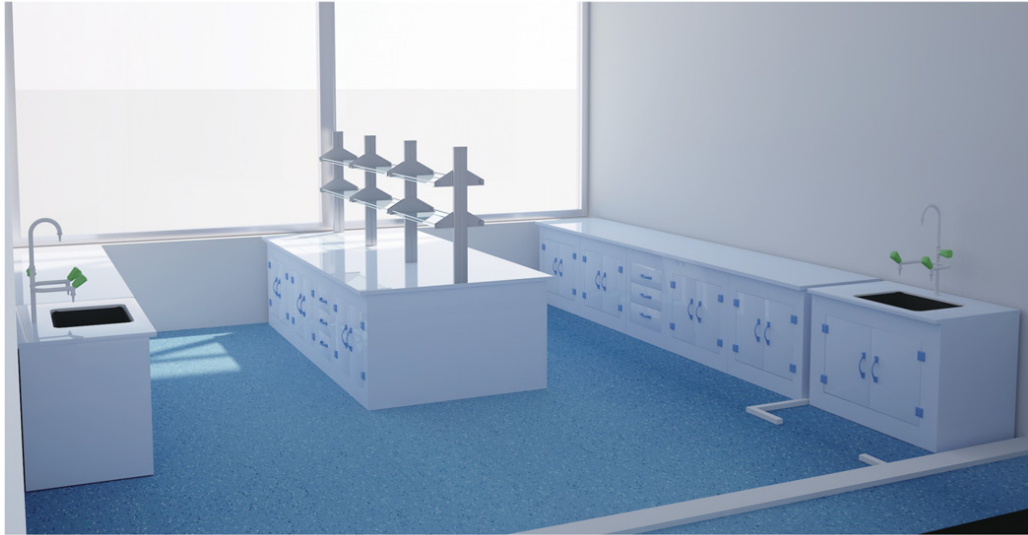
If your lab or workspace requires flexibility and planning for future uncertainty, modular options are a great choice.

The reduced cost-of-ownership, faster lead and installation times make it a great choice for most projects.

PP LAB BENCH



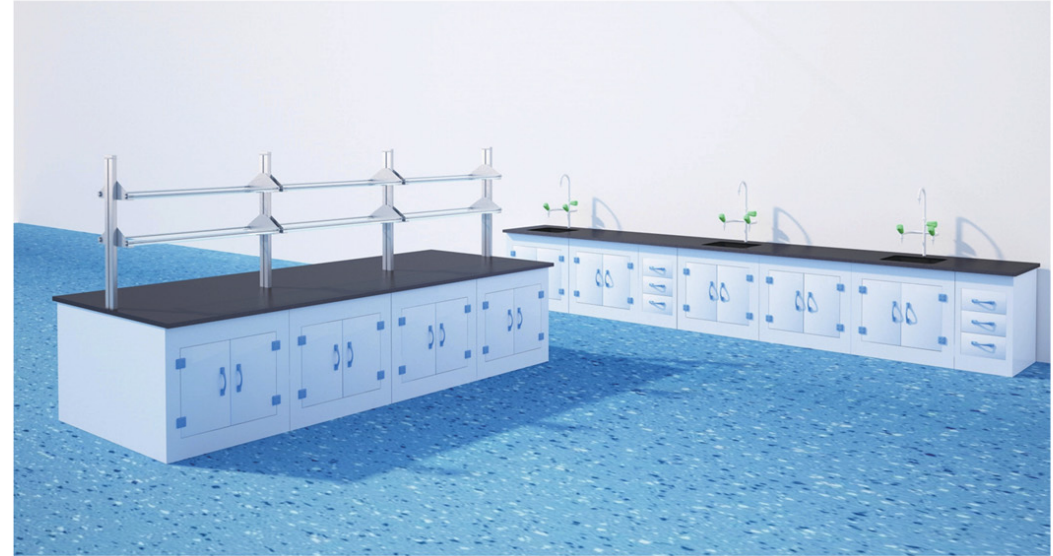
PP is polypropylene. With the continuous development of the laboratory industry, the requirements for lab furniture are increasing. Traditional all-steel furniture is difficult to adapt to the corrosion of strong acid and alkali. PP material is resistant to strong acid and alkali, non-toxic. Non-irritating, environmentally friendly and easy to recycle, long service life and other characteristics, quickly occupied a large number of markets.



SPECIFICATION

- (1) Countertop: Use 12mm porcelain white PP (polypropylene) sheets, or choose phenolic resin, epoxy resin, ceramic, trespac or other countertops.
- (2) Cabinet: 8-12mm porcelain white PP (polypropylene) sheets, welded into one piece, welded by the same color and homogeneous electrode.
- (3) Guide rail: The slide rail adopts the self-sliding system of the same cabinet material PP sheets, has good load-bearing and long service life, has strong acid and alkali resistance and good corrosion resistance, and has no metal and other parts. /Stainless steel rails.
- (4) Hinges, handles, bumping beads, screws: all made of PP material with good performance such as strong acid and alkali resistance, and the opening angle of the cabinet door is 180°.

Bgtech
Soluzioni Innovative srl



ADVANTAGE

- (1) The cabinet adopts integral molding and seamless welding technology, which greatly strengthens the structure of the cabinet and effectively reduces the deformation of the cabinet caused by thermal expansion and contraction.
- (2) The PP materials will not react with water, so there will be no bubbles, cracks and other phenomena on the test bench.
- (3) Resistant to strong acid and alkali chemicals, no corrosion, excellent weather resistance and impact resistance. Does not rust.
- (4) Non-toxic and non-irritating, PP will not produce any toxic gas during long-term use. When burning, no toxic and harmful gases will be released.
- (5) Environmentally friendly and easy to recycle, PP materials are used in environmental protection equipment by more and more enterprises due to their stable.
- (6) PP materials is more convenient to clean and maintain, it is not suitable for dust, and it is less likely to generate static electricity, so that the data obtained by the experiment is more accurate.

STAINLESS STEEL LAB BENCH



If the purpose of your lab demands a hygienic and sterile space, then stainless steel casework is a top choice. The ability of stainless steel to resist corrosive materials and heat makes it one of the best furniture choices for laboratories.

Laboratories need furniture, countertops, and storage solutions that are heavy duty and safe to use with materials that could damage or destroy regular furniture, shelving or countertops. That's why our stainless steel cabinets are a solid choice for your lab.



SPECIFICATION

- (1) Cabinet: 1.0mm full thickness 304/316# stainless steel sheet.
- (2) Countertop: Use double-layered 1.0mm thick 304/316# stainless steel sheet with bearing stiffener or embedded MDF board.
- (3) Connecting rod: Adopt 40*40*1.2mm thick square tube.
- (4) Handle: Non-welded linear handle/C-shaped stainless steel handle/Insertion stainless steel handle.
- (5) Rail: 304 stainless steel 16-inch three-section silent stainless steel rail.
- (6) Hinge: 105°/175° stainless steel buffer hinge.

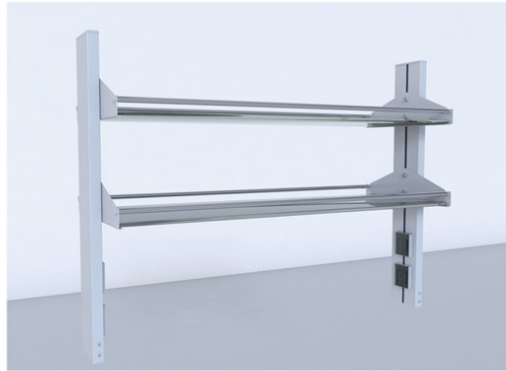
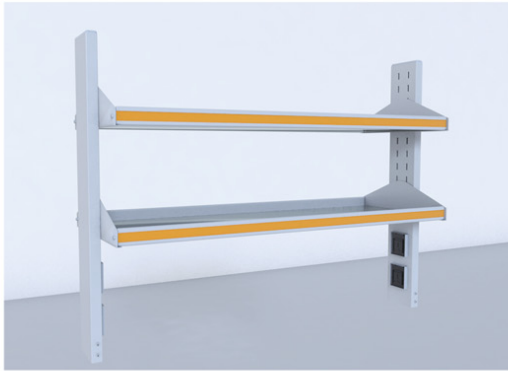
Bgtech
Soluzioni Innovative srl



FEATURES AND BENEFITS

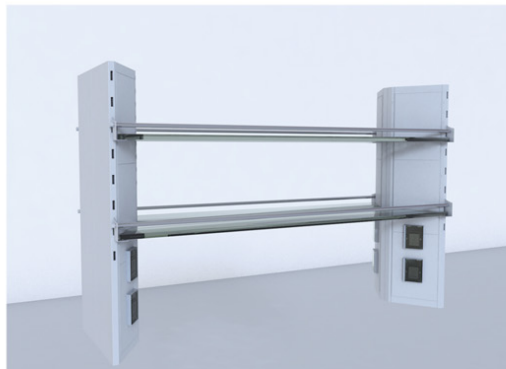
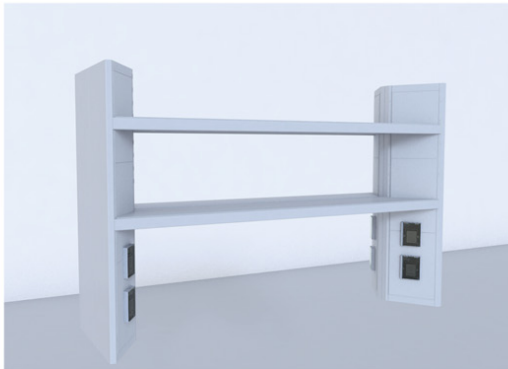
- Constructed of 304 or 316 Stainless Steel
- Durable and reliable
- Highly resistant to corrosion
- Resistant to heat and fire
- Flush interiors
- Non-porous surface for ease of cleaning
- Double swinging doors that provide full access to the entire interior

REAGENT RACK



STEEL-GLASS CONSTRUCTION

ALUMINUM-GLASS CONSTRUCTION



ALL STEEL RHOMBUS CONSTRUCTION

STEEL-GLASS RHOMBUS CONSTRUCTION

WALL CUPBOARD



WOODEN CONSTRUCTION

STEEL CONSTRUCTION

(1) Cabinet: The cabinet body is 15mm thick, the door and drawer panels are made of 18mm thick high-quality environmentally friendly double-face MDF/melamine board, and the edges are sealed with 2mm thick PVC edge strips. The edges are firm, clean, and free of burrs, the bond is firm and the PVC edge is 4mm thick transparent glass. Equipped with a movable shelf.

(2) Handle: Aluminum alloy linear handle/C-shaped stainless steel handle/Insertion Aluminum alloy handle.

(3) Hinge: DTC 105°/175° buffer hinge/stainless steel hinge.

(1) Cabinet: 1.0mm full-thickness high-quality cold-roll steel sheet is used as a whole; the steel surface is treated, phosphating and other processes, and then electrostatic powder coated with epoxy resin, cured at 220°C high temperature. and the surface is smooth, with a thickness of up to 1.15mm~1.2mm. The cabinet door is double-layered inside and outside, filled with sound insulation material, equip 4mm thick transparent glass and a movable shelf.

(2) Handle: Non-welded linear handle/C-shaped stainless steel handle/Insertion Aluminum alloy handle.

(3) Hinge: DTC 105°/175° buffer hinge/stainless steel hinge.

OTHER LAB BENCH



LAB SINK CABINET



FLOOR MOUNTED

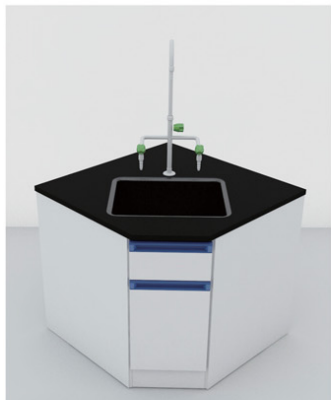


C-FRAME



H-FRAME

CORNER CABINET



FLOOR MOUNTED



C-FRAME



H-FRAME

ANTI-VIBRATION TABLE



Anti-vibration table is specially designed supporting equipment with vibration damping function which based on laboratory high-precision and anti-interference requests.



PHENOLIC RESIN TOP INLAID MARBLE WORKTOP IS FULL MARBLE OR GRANITE

DENTAL WORKING BENCH



Dental working bench is developed and produced based on the recommendations of foreign first-line dental technicians and combined with ergonomics.



DB-01



DB-02



DB-03



DB-04



DB-05



DB-06

PRIMARY&JUNIOR SCHOOL LAB



MECHANICS PHYSICS LAB PROGRAM



Item	Equip	Configuration details.
Water	×	Independent sink cabinet, faucet, teacher's podium sink
Electric	✓	Under-desk CNC student power supply (independent transformer)
Gas	×	Universal exhaust hood/desktop telescopic exhaust hood

BIOLOGY LAB PROGRAM



Item	Equip	Configuration details.
Water	✓	Independent sink cabinet, faucet, teacher's podium sink
Electric	✓	Under Desk Biochemical Power Box, biological auxiliary light source.
Gas	×	Universal exhaust hood/desktop telescopic exhaust hood

ELECTRICAL PHYSICS LAB PROGRAM



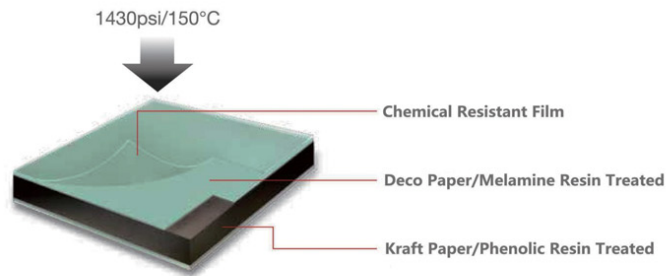
Item	Equip	Configuration details.
Water	×	Independent sink cabinet, faucet, teacher's podium sink
Electric	✓	Under-desk CNC student power supply (independent transformer)
Gas	×	Universal exhaust hood/desktop telescopic exhaust hood

VENTILATION CHEMISTRY LAB PROGRAM



Item	Equip	Configuration details.
Water	✓	Independent sink cabinet, faucet, teacher's podium sink, eye Wash
Electric	✓	Under Desk Biochemical Power Box
Gas	✓	Universal exhaust hood/desktop telescopic exhaust hood

LAB COUNTERTOP/WORKTOP



PHENOLIC RESIN COUNTERTOP

Phenolic Resin countertop is formed by laminating decorative color sheet dipped with melamine resin and multi-layer black kraft dipped with phenolic resin and pressing with steel plate under high temperature(150°C) and high pressure(1430psi).

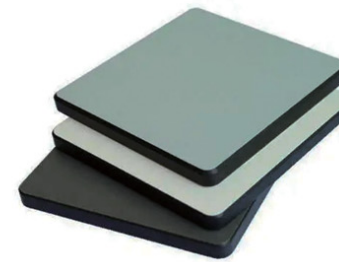
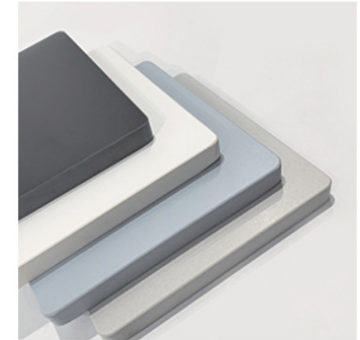


EPOXY RESIN COUNTERTOP

The main components of the epoxy resin countertop are epoxy resin, quartz sand, catalyst, curing agent and pigment, etc., which are made by several high-temperature baking.

CERAMIC COUNTERTOP

Blue porcelain clay, kaolin and feldspar are combined and a variety of special materials are added. Then, it is calcined in industrial baking at a high temperature of 1250°C or higher for a long time.



TRESPA COUNTERTOP

Ideal for harsh laboratory environments, Trespa withstands most aggressive chemicals and cleaning agents, does not support bacterial growth and helps ergonomics whilst avoiding contamination.

MARBLE/GRANITE COUNTERTOP

Marble countertops have high temperature resistance (can withstand temperatures above 1000 °C), high hardness, not easy to deform, good wear resistance, good load-bearing, good acid and alkali resistance and corrosion resistance, and are generally used in laboratory Anti-Vibration table and high temperature bench.



FUME HOOD



The fume hood provides safe ventilation to protect against exposure to hazardous or toxic fumes, vapors, or airborne particulate. It is primarily used in laboratory and manufacturing applications to protect the user or environment outside the hood, but can also be used to protect the materials or experiment under the hood.



ALL STEEL FUME HOOD

All steel fume hood is the most basic and common of all fume hoods. All steel fume hood is generally applicable for common laboratory applications such as boiling, evaporation, drying, and other applications that emit noxious fumes and vapors.



BENCHTOP FUME HOOD

User sit on a lab bench, also known as a workstation or utility table. This makes it easy to sit or stand in front of the fume hood and conduct your work through the opening created by lifting the vertical sash.

MULTI-SIDED FUME HOOD

Double-sided/four-sided/multi-sided fume hood is applied on the central table of the laboratory, saving space, maximizing the use of laboratory space, barrier-free operation, and space sharing.



WALK-IN FUME HOOD

Large apparatus or complex set-ups may require the use of a Fume Hood specifically designed to meet these requirements. The Walk-In Fume Hood has two vertical rising sashes that allow you to roll in large equipment or portable work stations.

FUME HOOD



PP FUME HOOD

PP(Polypropylene) Fume Hoods are made of high-quality non-corrosive polypropylene with excellent chemical resistance. PP Fume Hoods protect laboratory staff from noxious fumes released by acids, dangerous gas and organic solutions – materials and acids which regular steel hoods may not withstand.

PERCHLORIC ACID FUME HOOD

Perchloric acid fume hood is specially designed to handle the regular use of hot perchloric acid, hot nitric acid or perchloric acid.



STAINLESS STEEL FUME HOOD

Stainless steel fume hoods with duct port fabricated of grade 304/316 stainless steel, They have good resistance to a wide range of chemicals and excellent moisture and heat resistance. They can be decontaminated and cleaned easily.

DUCTLESS FUME HOOD

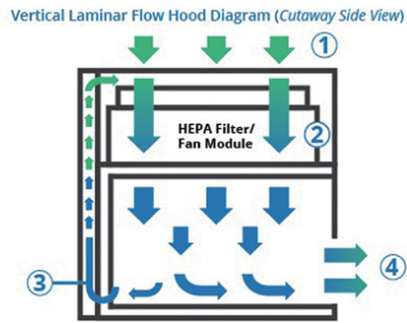
Ductless Fume Hood is a viable alternative to conventional fume hoods. This type of fume hood utilizes carbon or HEPA filtration to protect laboratory personnel from toxic chemical fumes, odors, and particles.



VAV FUME HOOD SYSTEM

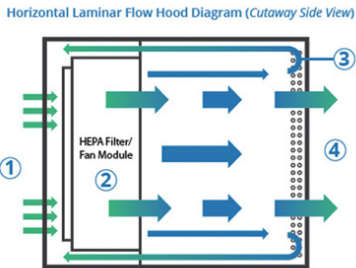
The Venturi airflow control valve combines a mechanical, pressure-independent regulating valve with a high-speed position/airflow controller to meet the unique needs of airflow control. Through aerodynamic design, the valve has a quiet working performance.

LAMINAR FLOW CABINET



VERTICAL VENTILATION

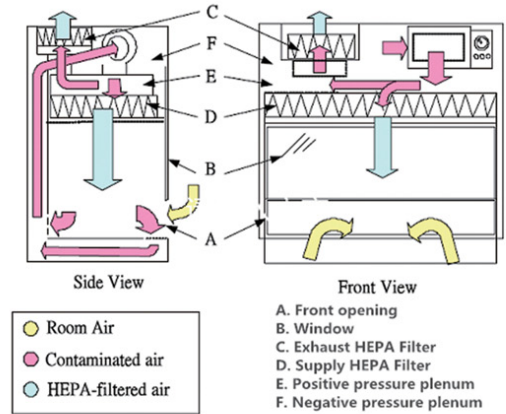
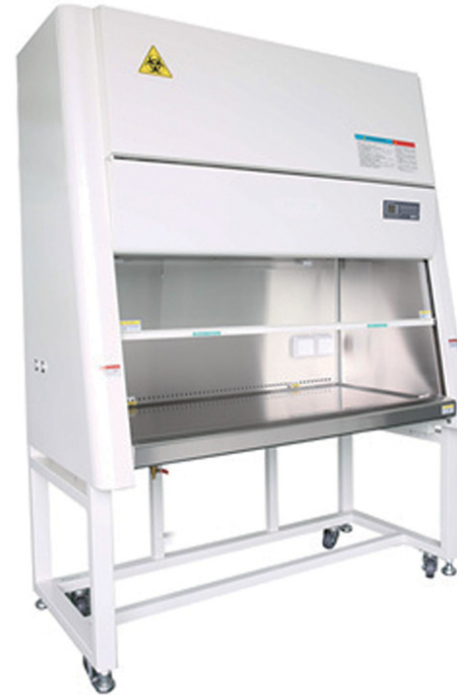
The air is pressed into the static pressure box through the top primary air filter and low-noise centrifugal fan, and then filtered again by the HEAP on the top, and blown evenly to the bottom of the top of the work area, forming an vertical air curtain with a high level of cleanliness, removing the original natural air in the work area.



HORIZONTAL VENTILATION

The air is pressed into the static pressure box through the bottom primary air filter and low-noise centrifugal fan, and then filtered again by the HEAP on the back side, and blown evenly to the bottom of the work area, forming an horizontal air curtain with a high level of cleanliness, removing the original natural air in the work area.

BIOSAFETY CABINET



BSC CLASS II A2

The gas circulation ratio is generally 30% discharged through the exhaust port HEPA FILTER, 70% recirculated back to the work area through the return air HEPA FILTER,

STORAGE CABINET



Flammable Storage Cabinet



Combustible Storage Cabinet



Model	Volume	Size(H*W*D)mm	NO.Door	Shelf Pcs	Shelf bearing
HP-SC-01	15L/4 Gallons	560*430*430	Single	1	50Kg
HP-SC-02	38L/10 Gallons	640*590*600	Single	1	50Kg
HP-SC-03	45L/12 Gallons	890*590*460	Single	1	50Kg
HP-SC-04	83L/22 Gallons	1650*600*460	Single	3	50Kg
		890*890*560	Double	1	50Kg
HP-SC-05	114L/30 Gallons	1120*1090*460	Double	1	50Kg
HP-SC-06	170L/45 Gallons	1650*1090*460	Double	2	100Kg
HP-SC-07	204L/54 Gallons	1650*600*870	Single	3	100Kg
HP-SC-08	227L/60 Gallons	1650*860*860	Double	2	100Kg
HP-SC-09	340L/90 Gallons	1650*1090*860	Double	2	100Kg

✓YELLOW

✓RED

✓GREEN

✓BLUE

Weak Corrosive Storage Cabinet



Pesticide Storage Cabinet



Strong Corrosive Storage Cabinet (PP Material)



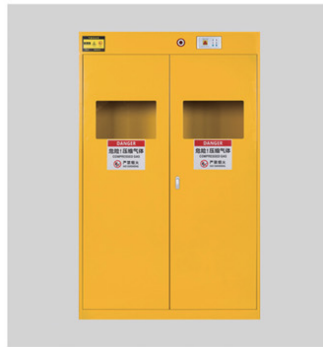
GAS CYLINDER CABINET



SINGLE CYLINDER



DOUBLE CYLINDER



TRIPLE CYLINDER

INTELLIGENCE HAZARDOUS CHEMICAL CABINET



The Intelligence hazardous chemical cabinet has temperature and humidity monitoring, VOC monitoring, exhaust fan, mobile phone online monitoring, remote control, and continuous push of alarm information.

Bgtech
Soluzioni Innovative srl

DUCTLESS MEDICINE STORAGE CABINET



The ductless medicine storage cabinet is designed for the storage of toxic and harmful chemicals, and is suitable for various fields and various types of chemicals. It can store most chemicals used in the laboratory, purify the toxic gas in the cabinet, and purify the laboratory air for 24 hours.

PATHOLOGY WORKSTATION



Pathological sampling bench is widely used in hospital pathology department, pathology laboratory, etc. Reasonable ventilation system protects operator away from the harmful gas produced by the formalin during sampling. The hot & cold water system ensures it can adapt work in different climates.

LAB CABINET



Bgtech
Soluzioni Innovative srl



WOODEN FILE CABINET



STEEL FILE CABINET



STEEL REAGENT
MEDICINE CABINET



STEEL MULTI-FUNCTION
MEDICINE CABINET



STEEL VESSEL CABINET



STEEL WARDROBE



STEEL STORAGE CABINET



PP REAGENT
MEDICINE CABINET



PP VESSEL CABINET



STAINLESS STEEL REAGENT
MEDICINE CABINET



SS MULTI-FUNCTION
MEDICINE CABINET



SS WARDROBE



PARAFFIN BLOCK CABINET



SLIDE CABINET



MOBILE SHELVING



STAINLESS STEEL SHOE CABINET



STEEL STORAGE SHELVING



STAINLESS STEEL
STORAGE SHELVING



STAINLESS STEEL TROLLEY



PASS BOX

A pass box, which is also called a transfer hatch or SAS pass (sterile access system), works as a barrier between areas with different levels of cleanliness when materials do have to be moved. The equipment is used to transfer material from an area of lower cleanliness to an area of higher cleanliness, and vice versa.



AIR SHOWER

Air Showers are self-contained chambers installed strategically at entrances to cleanrooms and other controlled environments. They minimize particulate matter entering or exiting the clean space to mitigate the risk for cross-contamination.

AIR SHOWER PASS BOX

Its high velocity HEPA-filtered air jets ensure that all materials are scrubbed off of possible particulates that might affect the sterility of the process and final products.



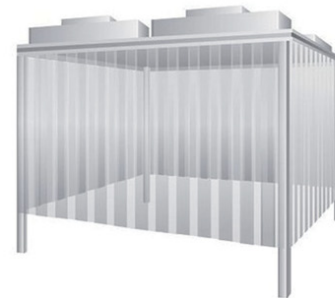
CARGO AIR SHOWER

The cargo air shower is a necessary passage for goods to enter the clean room, and it can reduce the pollution problems caused by the goods entering and leaving the clean room.



LAMINAR FLOW PASS BOX

The Dynamic/laminar flow pass box are aseptic architectural systems used to prevent contaminants from leaking into aseptic suites. They are utilized for aseptic transfer of materials into and out of the critical process environments.



CLEAN BOOTH

Clean booth is a kind of rapidly-established simple clean room with a variety of cleanliness level and space collocation. It can be designed according to the user's demand, is also a kind of movable sample purification device with small investment and high purification.

WATER FAUCET



SINGLE OUTLET FAUCET



DOUBLE OUTLET FAUCET



TRIPLE OUTLET FAUCET



MIXER FAUCET (HOT&COLD)



STAINLESS STEEL FAUCET



PURIFIED WATER FAUCET



SENSOR FAUCET



WATER VALVE & WATER OUTLET

GAS FAUCETS



SINGLE GAS VALVE



DOUBLE GAS VALVE



TRIPLE&QUADRUPLE GAS VALVE

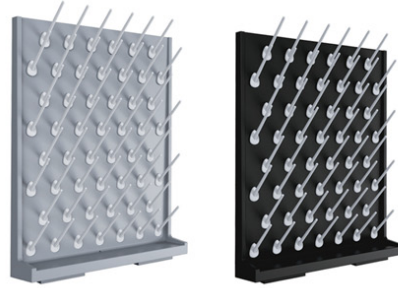


GAS VALVE&GAS OUTLET

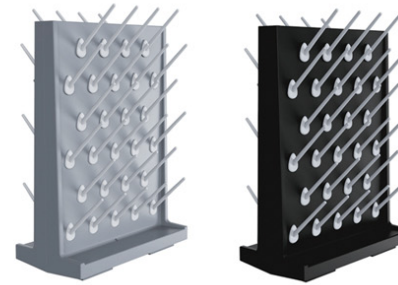
PEGBOARD



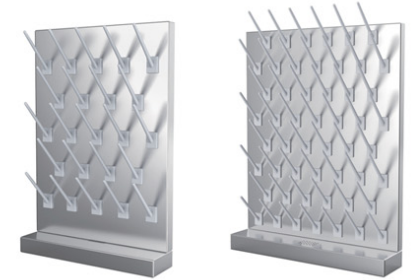
PP PEGBOARD, 27 PEGS



PP PEGBOARD, 52 PEGS



DOUBLE FACED PP PEGBOARD, 54 PEGS



STAINLESS STEEL PEGBOARD

Bgtech
Soluzioni Innovative srl

LAB SINK



PP RECTANGLE SINK



PP OVAL CUPSINK



STAINLESS STEEL SINK

EYE WASH&EMERGENCY SHOWER



DECK MOUNTED EYE WASH



WALL&FLOOR MOUNTED EYE WASH



DRENCH SHOWER



EMERGENCY SHOWER



EMERGENCY SHOWER ROOM

FUME EXHAUST



SINGLE&DOUBLE JOINTS FUME EXHAUST



TRIPLE JOINTS FUME EXHAUST



ALUMINUM ALLOY FUME EXTRACTORS



SS ATOMIC ABSORPTION SPECTROMETER EXTRACTORS

EXHAUST EQUIPMENT



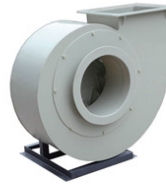
PP CENTRIFUGAL BLOWER



DIAGONAL BLOWER



AXIAL FLOW BLOWER



PP CENTRIFUGAL BLOWER



PP ACTIVATED CARBON ABSORPTION BOX



PP WET SCRUBBER

LAB STOOL

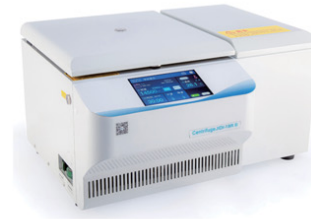




OVEN



INCUBATOR



CENTRIFUGE



BALANCE



SPECTROPHOTOMETER



MOISTURE TESTER



WATER BATH



PH METERS



ROTARY EVAPORATOR



TABLET DISSOLUTION TEST APPARATUS



MICROSCOPE



PIPETTE



MAGNETIC STIRRER



DISPERSING MACHINE



HOMOGENIZER



PELLET PRESS MACHINE



AUTOCLAVE & STERILIZER



WATER PURIFIER



REFRIGERATOR



FREEZER



RECIRCULATING CHILLE



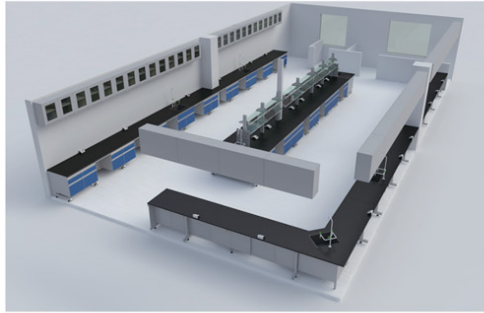
GLASSWARE WASHER



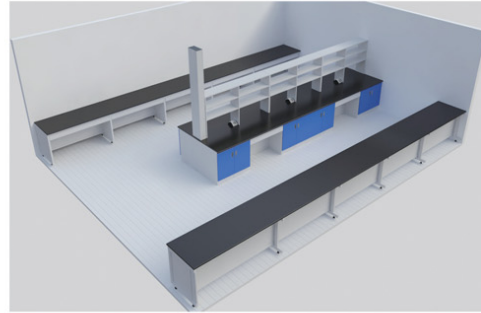
GLASSWARE



PP PIPE



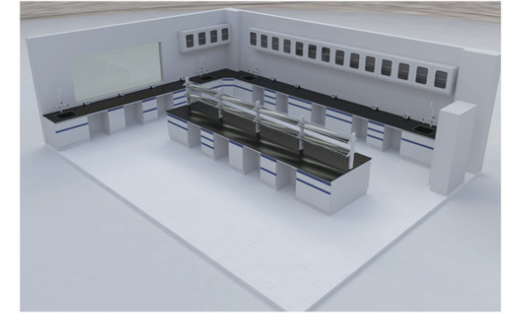
INSTIUTE OF CHEMISTRY



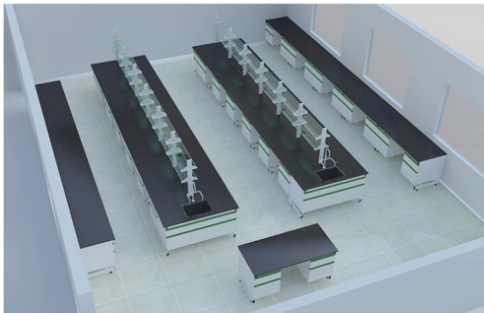
PHYSICS LAB



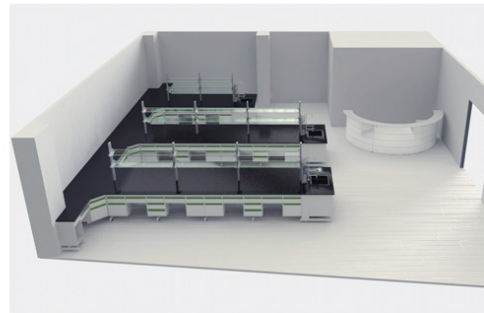
PRIVATE LAB



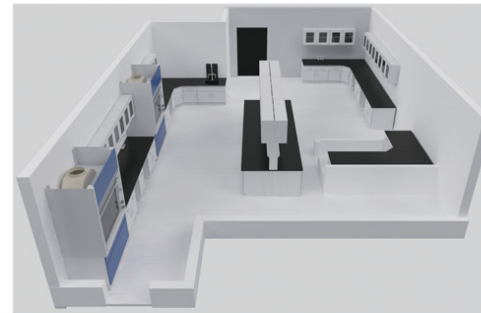
BIOLOGY LAB



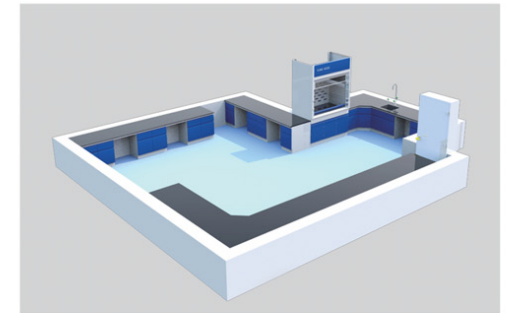
SCHOOL LAB



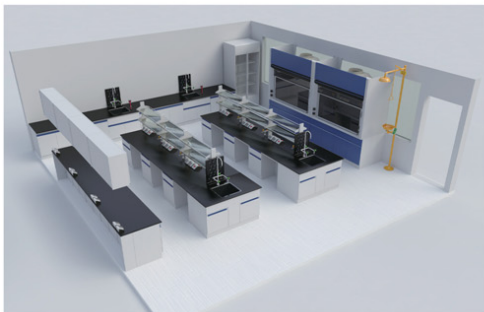
INSTITUTIONS OF UNIVERSITY



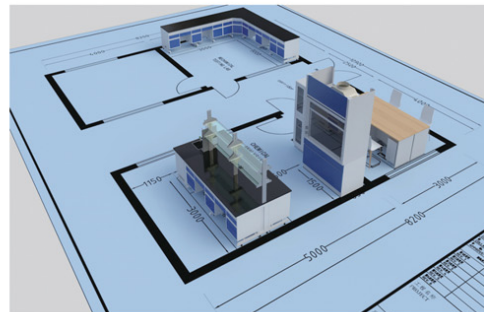
INSTITUTE OF BACTERIA



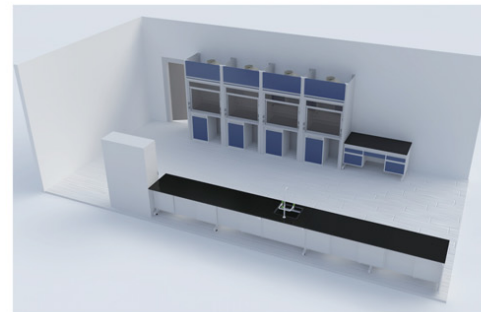
GOVERMENT CHEMISTRY LAB



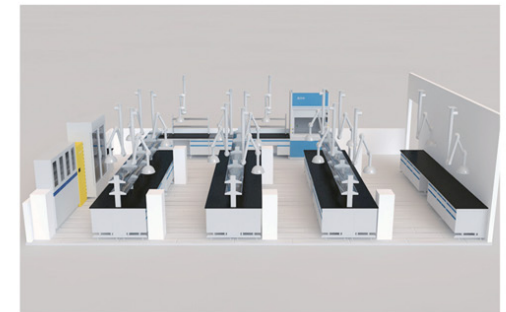
PHARMACEUTICAL LAB



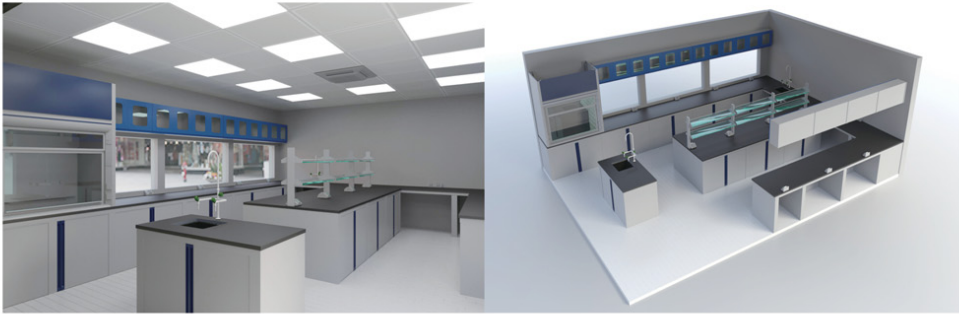
INSPECTION CENTER LAB



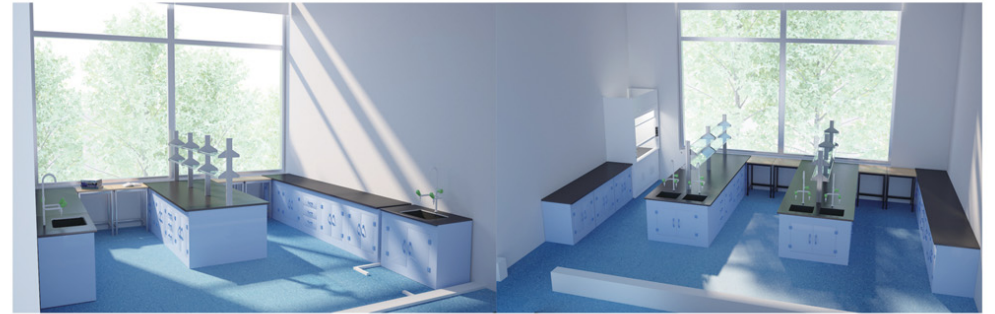
ENVIRONMENTAL TESTING



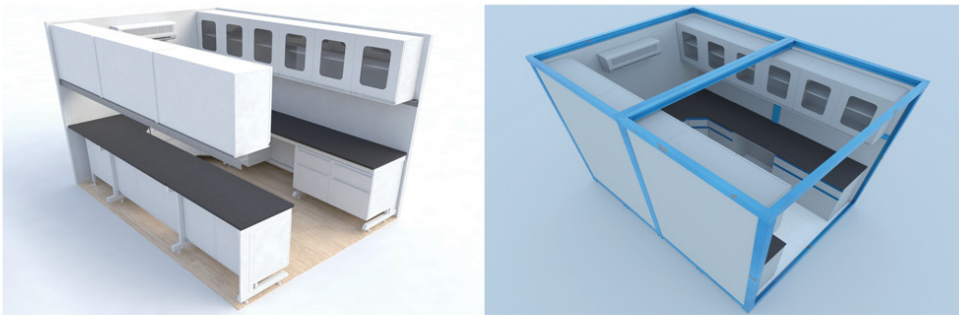
PLANT CULTURE LAB



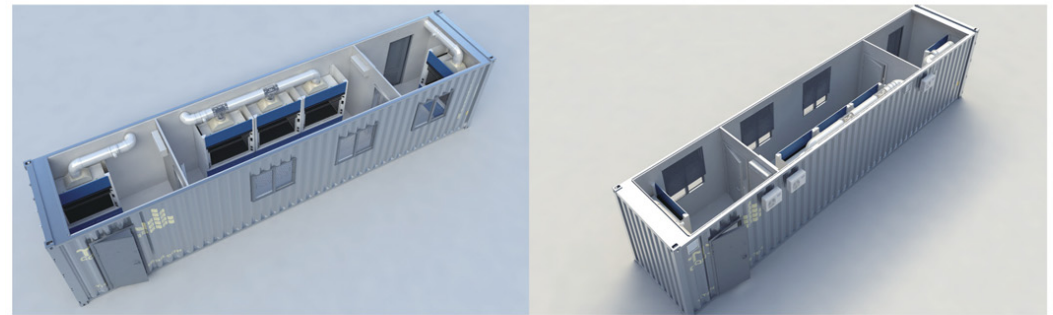
COSMETIC LAB



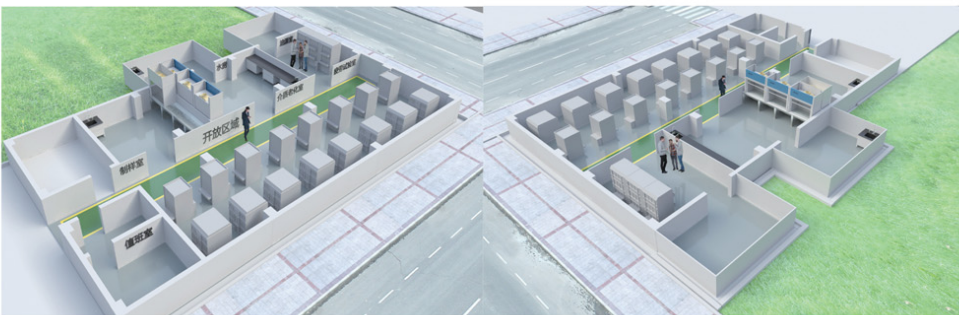
STRONG ACID AND ALKALI TESTING CENTER (PP MATERIAL)



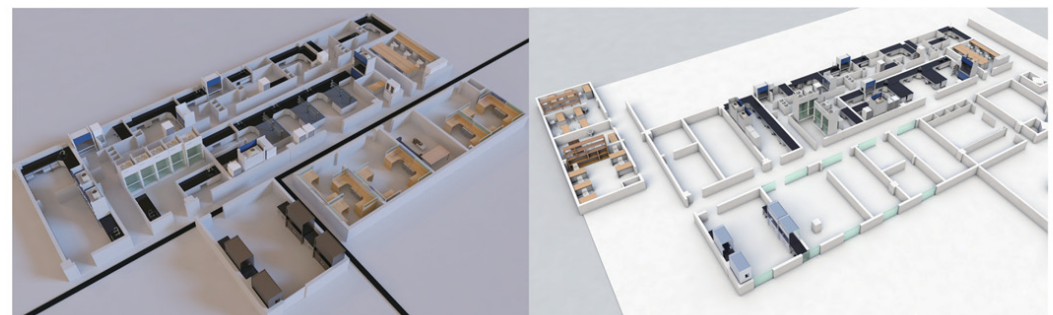
MICRO CONTAINER LABORATORY



LARGE CONTAINER LABORATORY



INSTITUTE OF SYNTHETIC MATERIALS



HOSPITAL CLINICAL LABORATORY

Bgtech

Soluzioni Innovative srl

VIA PRIVATA DEL GONFALONE NR. 3 – 20123 MILANO

P.IVA 10221740961 TEL. 02-39198550 E-MAIL: INFO@BGTECH.IT

SEDE OPERATIVA NORD: VIA GIOVANNI PASCOLI NR. 25 – COLOGNO MONZESE (mi)

SEDE OPERATIVA SUD: VIA PIETRO SCOZZARI NR. 46 MISILMERI (PA)

WWW.BGTECH.IT – WWW.CAMPUSBGTECH.IT